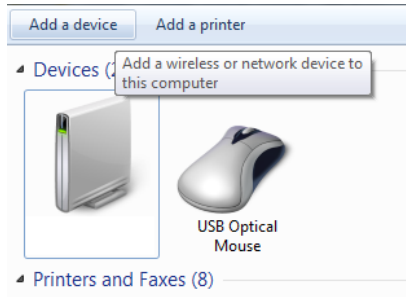


SMARTstat™ Quick Reference Guide

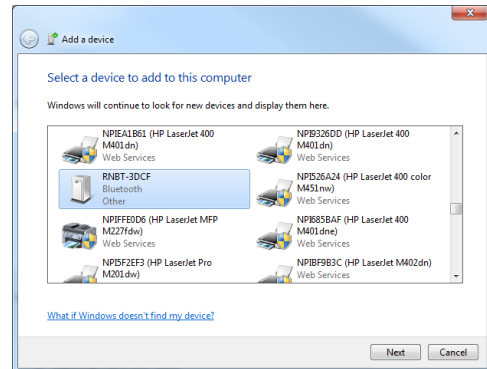
1. Configure PC to Bluetooth

Step 1 – Add the Bluetooth Device to your Computer

Select the Start Menu, select Devices & Printers and add device. You may also use the Bluetooth icon on the taskbar. Right-click the Bluetooth icon for the setup menu.

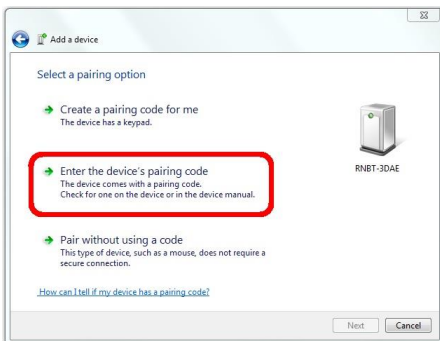


Step 2 – Search for the RNBT-xxxx Device



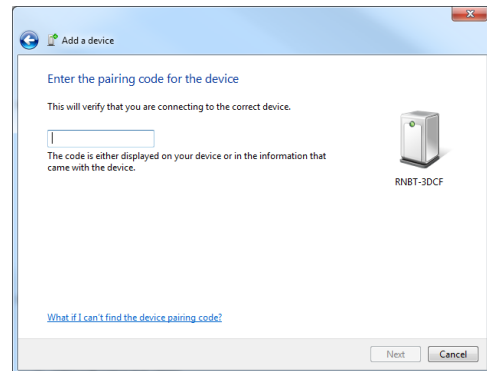
Highlight your RNBT device and click Next to continue.

Step 3 – Pair the RNBT-xxxx Device



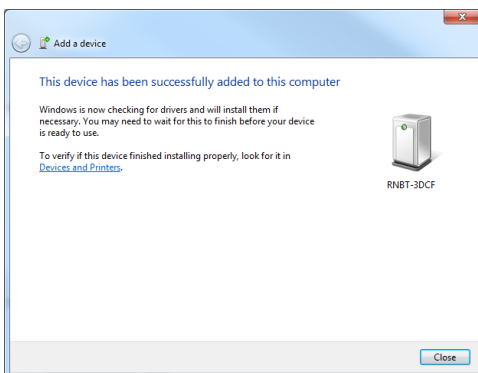
Select Enter the Device's Pairing Code and click Next.

Step 4 – Enter the Pairing Code (4230)



Enter the pairing code 4230 and click Next.

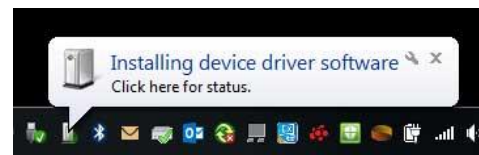
Step 5 – The Device is Now Added



Click Close to continue. **NOTE: Do not rename the device.**

Step 6 – Wait for COM Port Integration

You may see an indicator in the taskbar while the Bluetooth finishes installing its device driver.



Wait for the indicator to finish and then you may connect to the device.

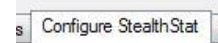
2. Connect SMARTstat to the Device

Step 1 – Launch the SMARTstat Application

Once launched, the default *Collector Files* tab will be displayed.

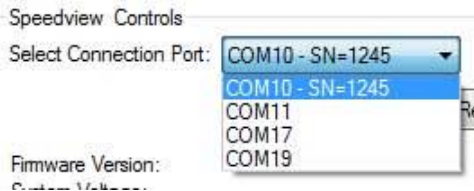
Step 2 – Select the Configure StealthStat tab

Select the *Configure StealthStat* tab.



When clicked, the StealthStat controls and Download Data buttons will be visible.

Step 3 – Select the COM Port



The *Select Connection Port* menu will auto-populate when the application launches with the existing COM ports for your computer. Select the one that displays a serial number next to the COM identifier.

In this example, COM10 – SN 1245 found a StealthStat with serial number 1245 at COM10.

Step 4 – Press the Refresh Settings Button



This will tell the application to connect to the StealthStat using the COM port you selected. It will communicate with the StealthStat and update the various StealthStat controls on the screen with the current configuration of the connected unit.

The StealthStat and the application software will be connected at this point and you should see the unit's Firmware Version, System Voltage, etc.

3. Downloading Data Files

NOTE: If there is a study in progress (shown next to *Current Study Vehicle Count*) and you want to stop it to get that data as well, click the *Stop* button to the right of *StealthStat Status*.

There are two options for using the Bluetooth connection to download files from the StealthStat:



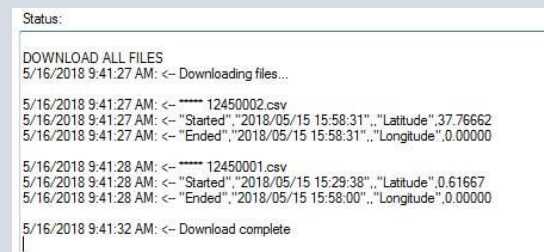
Option 1: If connected to the StealthStat, pressing this button will download any new files that have not previously been downloaded.



Option 2: If connected to the StealthStat, pressing this button will download all files that are still present even if previously downloaded.

NOTE: This can be time consuming if a large number of files are present.

As files are downloading, the *Status* window will update showing the file information as they download.



Once the files have been downloaded, *Download complete* will appear in the *Status* window of the application. The downloaded files will be located in your StealthStat data files directory.

